



26 Matthew Flinders Place Burraneer NSW

 5  4  7

### A Masterpiece of Deep Waterfront Luxury with World-Class Views

Commanding breathtaking and uninterrupted panoramas across Burraneer Bay, the pristine Port Hacking waterway and the Royal National Park, this extraordinary street to deep waterfront residence stands as a statement of architectural excellence, privacy and prestige. This is a rare offering of scale, luxury and world-class waterfront living.

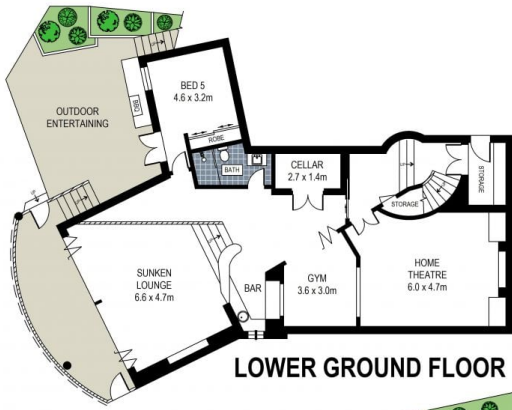
Positioned on the exclusive Burraneer Peninsula, this trophy home is in a class of its own capturing dramatic gun-barrel water views from every level, with walls of glass inviting an abundance of natural light and framing the ever-changing coastal backdrop.

Designed to impress at every turn, this striking residence reveals expansive open-plan living and dining zones, seamlessly fusing multiple alfresco terraces for effortless entertaining.

### Expressions of Interest

**Type** : House  
**Land Size** : 1094 sqm  
**View** : <https://www.brookes.net.au/sale/nsw/sutherland/burraneer/residential/house/8697630>

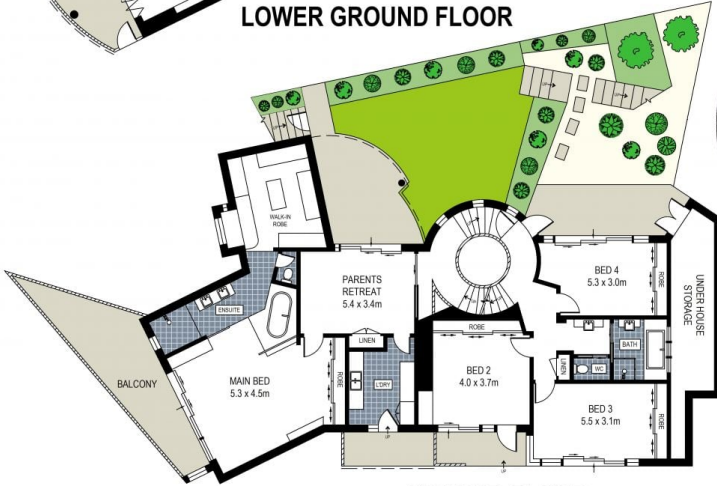
**Jon Brookes**  
 m: 0416069169  
 o: 95468666  
 e: jb@brookes.net.au



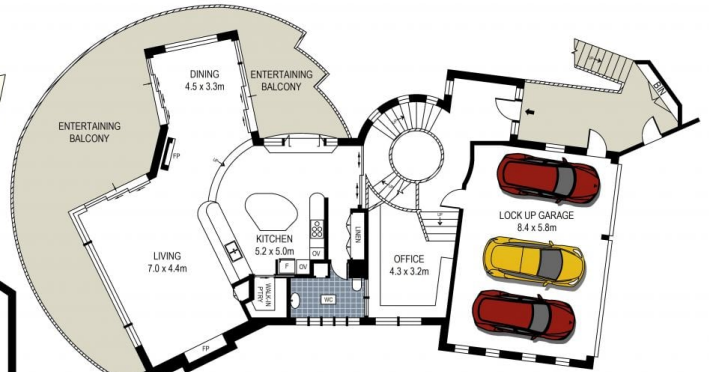
**LOWER GROUND FLOOR**



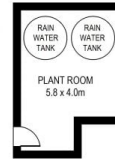
**SITE PLAN (NOT TO SCALE)**



**GROUND FLOOR**



**ENTRY FLOOR**



0 1 2 3 4 5 metres

APPROXIMATE  
INTERNAL : 393.5 m<sup>2</sup>



PLANS SHOWN ARE FOR MARKETING PRESENTATION ONLY AND ARE NOT PART OF ANY LEGAL DOCUMENT. SUBJECT TO ERRORS, INACCURACIES AND SHOULD NOT BE USED AS SOLE AND ACCURATE REFERENCE.

26 Matthew Flinders Place, Burraneer

