



17/227-241 Princes Highway Kogarah NSW

 3  1  2

TWO LEVEL APARTMENT WITH ELEVATED DISTRICT & BAY VIEWS

By Negotiation

Located within the leafy " Garden Terrace " development this highly sought but rarely found terrace style apartment boasts the coveted north-easterly aspect features and provides generous sun-filled proportions, a fusion of seamless indoor living space & outdoor balcony and terracing that is sure to impress even the most discerning buyer.

Type : Apartment

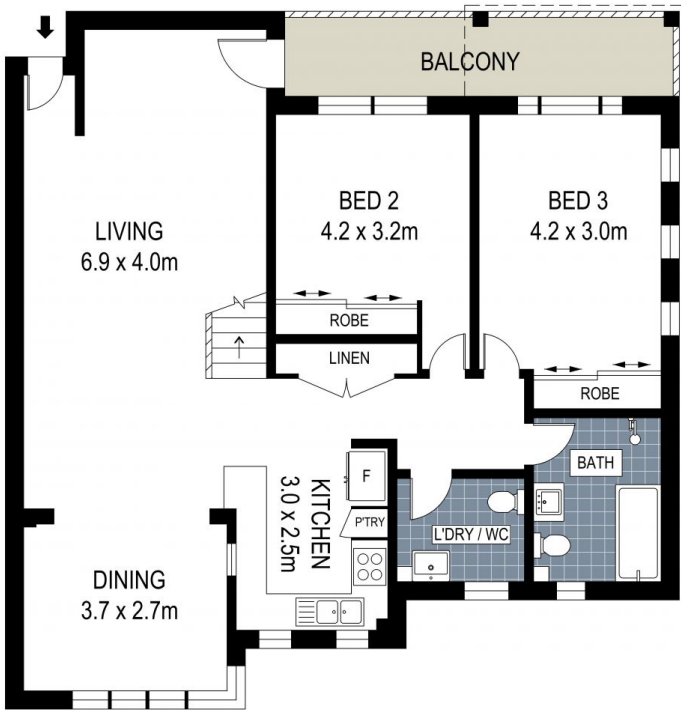
View : <https://www.brookes.net.au/sale/nsw/st-george/kogarah/residential/apartment/7941466>

Positioned in a prized location within close proximity to local train stations, shops, cafes, eateries, parks, schools, hospitals, bays and beaches.

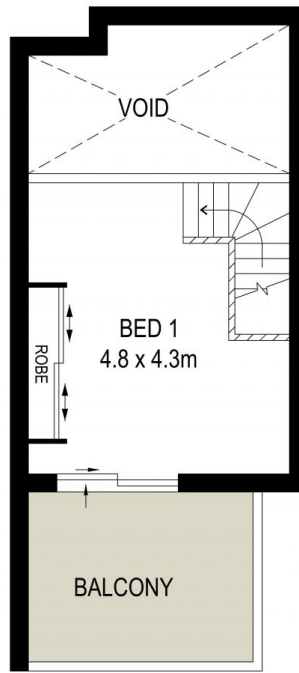
- Huge strata lot totalling 169 square metres (includes terrace & garaging)
- Only one common wall
- Immaculately presented & well-appointed inclusions
- Sun-filled open plan interiors, versatile layout
- Sleek stone kitchen with quality appliances

Jon Brookes
m: 0416 069 169
o: 9544 5555
e: jb@brookes.net.au

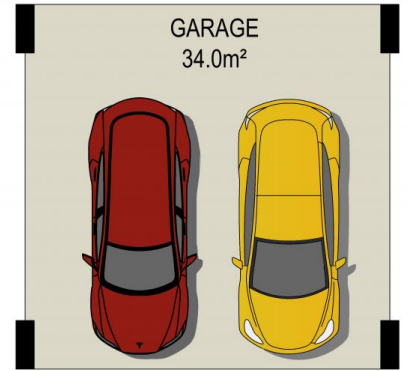
Glenn Rosier
m: 0411 103 070
o: 9546 8666
e: gr@brookes.net.au



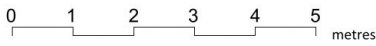
SECOND LEVEL



UPPER LEVEL



BASEMENT



PLANS SHOWN ARE FOR MARKETING PRESENTATION ONLY AND IT'S NOT PART OF ANY LEGAL DOCUMENT. SUBJECT TO ERRORS, INACCURACIES AND IT SHOULD NOT BE USED AS SOLE AND ACCURATE REFERENCE.

17 / 227-241 Princes Highway, Kogarah

