



22/1317-1321 Princes Highway Heathcote NSW

 2  2  3

STYLISH APARTMENT WITH TRIPLE PARKING

This immaculately presented sun filled top floor two bedroom apartment offers desired low maintenance living incorporating functional design and taking full advantage of natural sunlight.

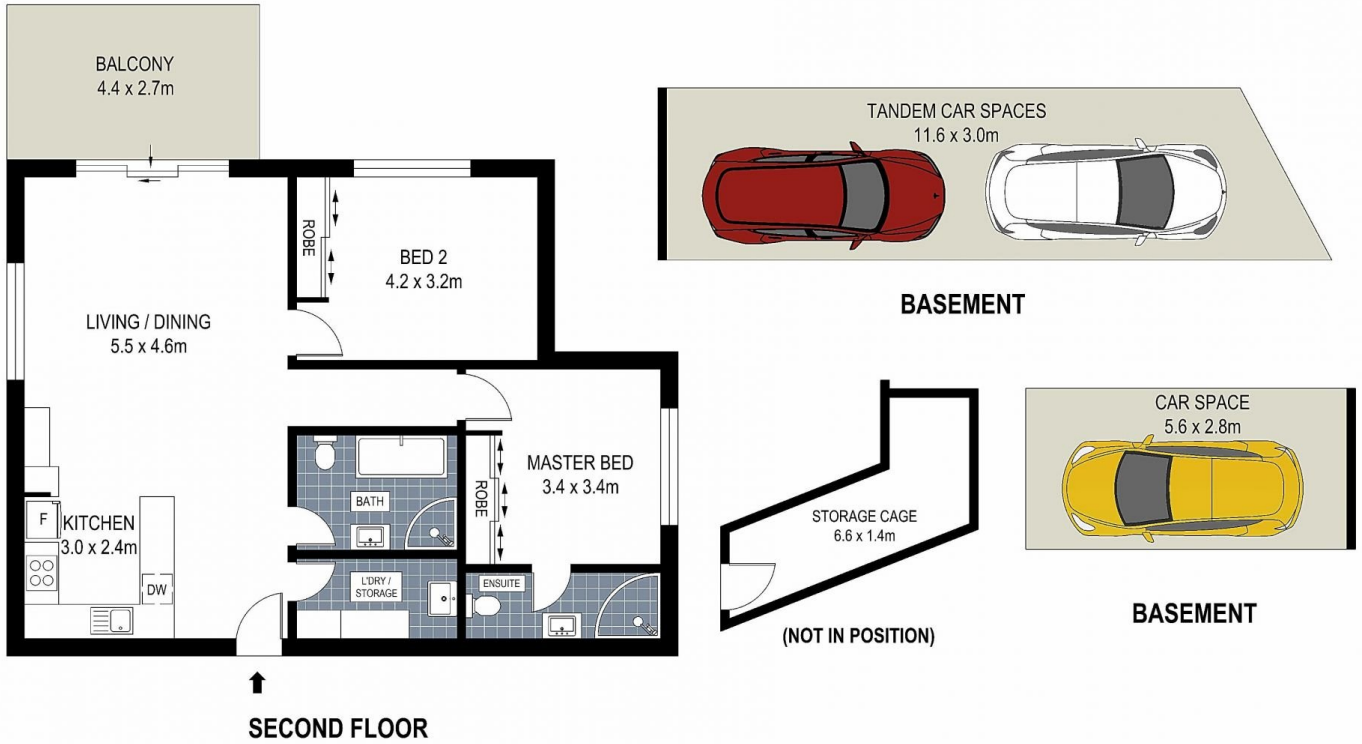
Set in a security building with lift access this modern apartment is situated in a convenient location close to restaurants, cafes, shopping and transport.

- Spacious open plan living & immaculate presentation throughout
- Modern stone kitchen with quality stainless steel appliances & breakfast bar
- Generous bedrooms each with built-in robes and ceiling fans
- Private East facing terrace
- Complete main bathroom plus ensuite to master bedroom
- Internal laundry with plenty of cupboard storage

Type : Apartment
Land Size : 154 sqm
View : <https://www.brookes.net.au/sale/nsw/sutherland/heathcote/residential/apartment/7888545>

Brett Ramsey
 m: 0451 922 229
 o: 95468666
 e: brett@brookes.net.au

Jon Brookes
 m: 0416 069 169
 o: 9544 5555
 e: jb@brookes.net.au



0 1 2 3 4 5 metres



PLANS SHOWN ARE FOR MARKETING PRESENTATION ONLY AND IT'S NOT PART OF ANY LEGAL DOCUMENT. SUBJECT TO ERRORS, INACCURACIES AND IT SHOULD NOT BE USED AS SOLE AND ACCURATE REFERENCE.

22 / 1317-1321 Princes Highway, Heathcote

