



23 Geoffrey Crescent Loftus NSW

 3  1  1

### IMMACULATE SINGLE LEVEL HOME WITH TWO STREET FRONTAGES

Set in a highly sought after location, fusing fresh sun filled interiors & modern simplicity throughout this stunning single level home offers an exciting opportunity and is sure to impress.

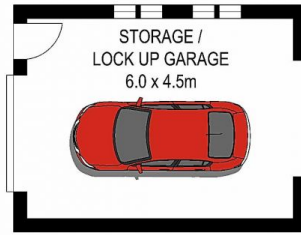
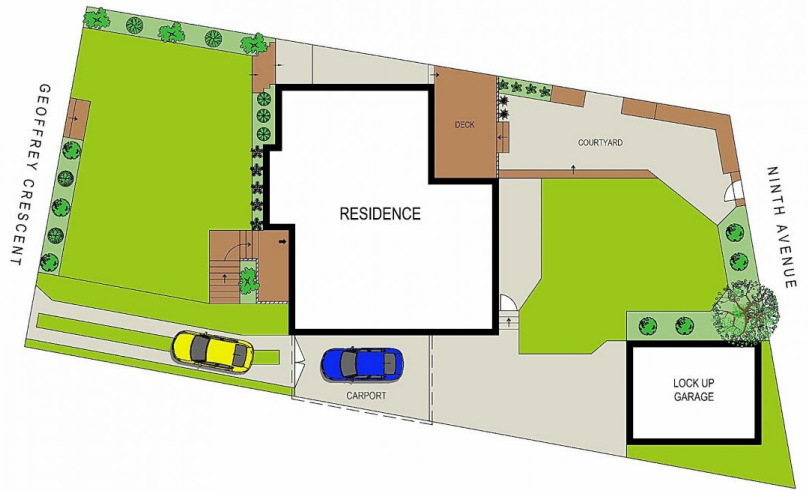
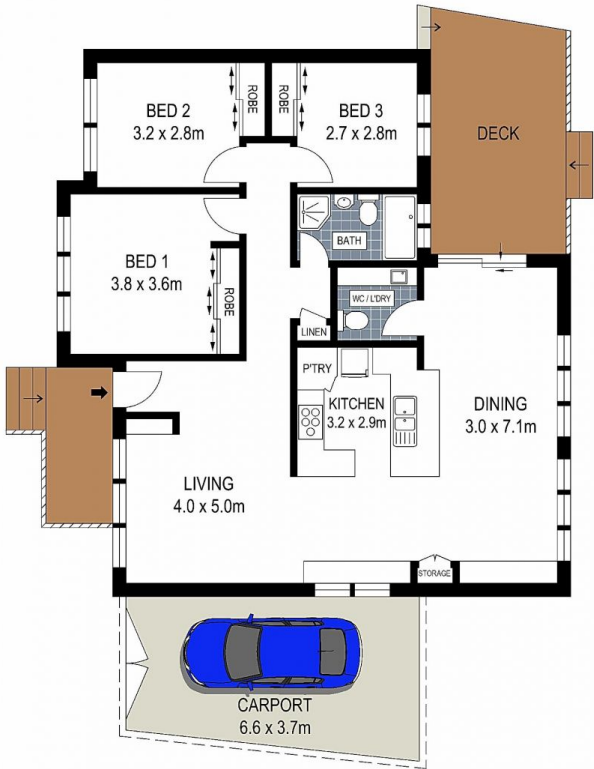
Boasting desirable two street frontages & private manicure grassed yards this immaculate home is located only moments to local schools, shops, reserves & train station.

- Immaculate single level family home
- Modern simplicity & updated sun filled interiors
- Stylish stone kitchen with quality appliances & gas cooking
- Spacious bedrooms all with built-in robes
- Internal laundry with additional toilet
- Two street frontages & manicured grassed yards
- Expansive alfresco entertaining area
- Lock up garaging plus plenty of off street parking

**Type** : House  
**Building Size:** 112 sqm  
**Land Size** : 556 sqm  
**View** : <https://www.brookes.net.au/sale/nsw/sutherland/loftus/residential/house/7747340>

**Glenn Rosier**  
 m: 0411 103 070  
 o: 9546 8666  
 e: gr@brookes.net.au

**Joanne Rosier**  
 m: 0420 945 765  
 o: 9546 8666  
 e: jr@brookes.net.au



SITE PLAN  
(NOT TO SCALE)

GROUND FLOOR

0 1 2 3 4 5 metres



PLANS SHOWN ARE FOR MARKETING PRESENTATION ONLY AND IT'S NOT PART OF ANY LEGAL DOCUMENT. SUBJECT TO ERRORS, INACCURACIES AND IT SHOULD NOT BE USED AS SOLE AND ACCURATE REFERENCE.

23 Geoffrey Crescent, Loftus

