



132 Stuart Street Blakehurst NSW

 5  3  2

**'Bedarra' on the Peninsular - 1174sqm Street to Waterfront Estate in a prized location**

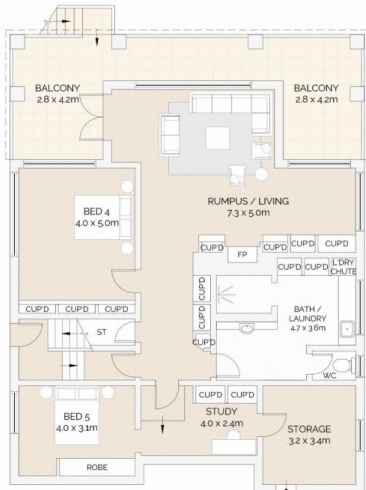
Occupying the pinnacle of the peninsular in coveted Bald Face Point and commanding 180-degree panoramas, this captivating waterfront property is perfectly situated to ensure an indoor/outdoor lifestyle in blissful privacy. With bushland reserve as your neighbour and one of just a handful of direct-waterfront properties on the east side of Bald Face Point, the coming-to-market of this home represents a significant opportunity in an iconic position. Perched on a vast landscaped block that descends all the way from street to absolute waterfront with private sandy beach access, this is an incredible estate that is blessed with sweeping views and a multitude of living and entertaining spaces, including a sun-bathed pool, manicured gardens, sundecks, a boathouse, boat ramp and jetty with pontoon. Embracing a leafy setting framed by the mature gum trees of Bald Face Point and showcasing exquisite natural sandstone features such as Pulpit Rock named by Bass &

**Type** : House  
**Land Size** : 1174 sqm  
**View** : <https://www.brookes.net.au/sale/nsw/st-george/blakehurst/residential/house/7713163>

**Brett Ramsey**  
 m: 0451 922 229  
 o: 95468666  
 e: brett@brookes.net.au

**Jon Brookes**  
 m: 0416 069 169  
 o: 9544 5555  
 e: jb@brookes.net.au

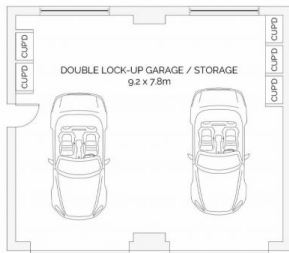
# 132 Stuart Street, Blakehurst - 'Bedarra'



LOWER GROUND FLOOR



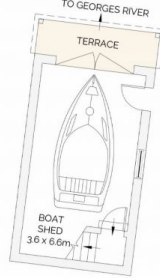
LOWER GROUND FLOOR



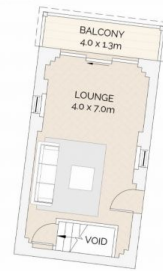
GROUND FLOOR



GROUND FLOOR



GROUND FLOOR (BOAT HOUSE)



UPPER FLOOR (BOAT HOUSE)



SITE PLAN (NOT TO SCALE)



0 1 2 3 4 5

Scale in metres. Indicative only. Dimensions are approximate. All information contained herein is gathered from sources we believe to be reliable. However we cannot guarantee its accuracy and interested persons should rely on their own enquiries.