



1/59 Yarran Road Oatley NSW

 3  2  2

### Contemporary Duplex

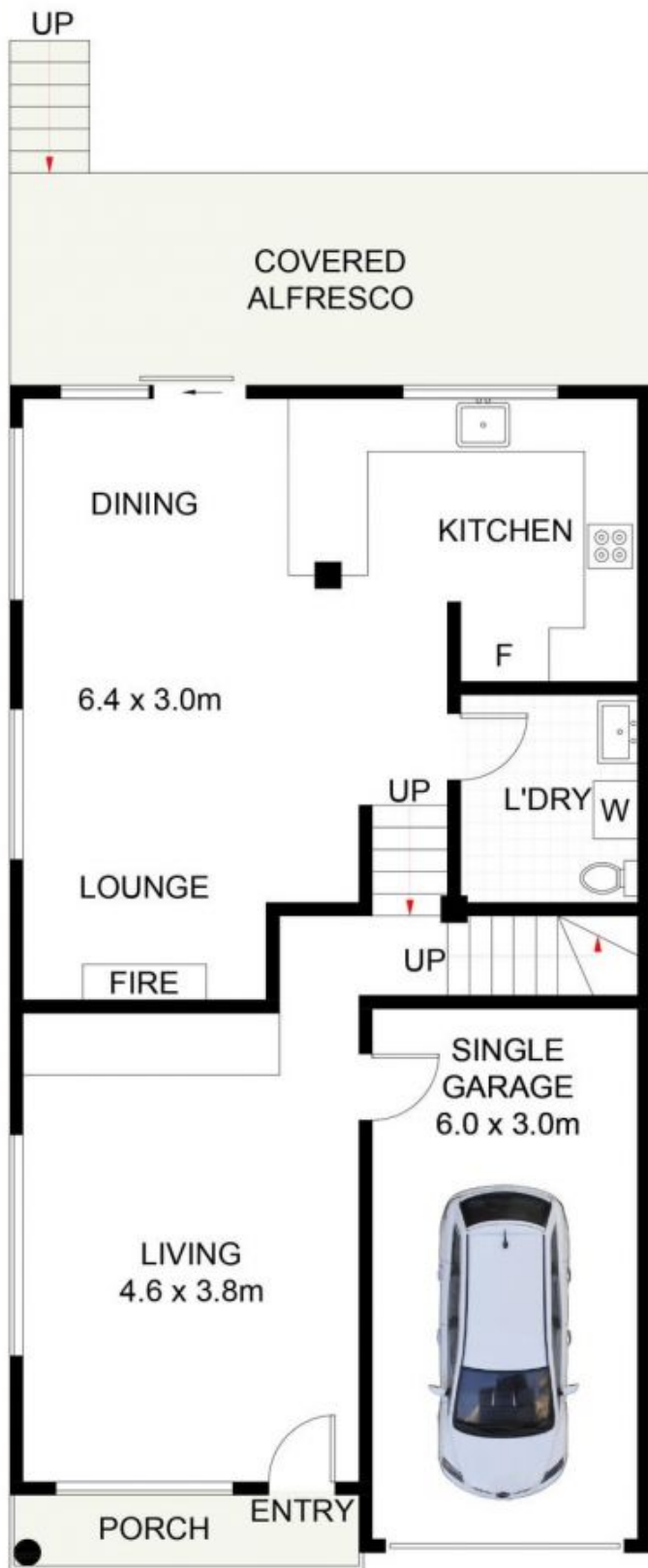
Stylish Hamptons inspired family home showcasing modern interiors and high quality finishes throughout. Offering a seamless flow for indoor/outdoor entertaining and multiple living spaces for the whole family.

- ? Spacious combined lounge and dining with gas fireplace, plus additional second living room.
- ? Open plan kitchen with a gas cooktop, plenty of cupboard storage and breakfast bar.
- ? Master suite offering walk in robe, study nook and private ensuite bathroom.
- ? Two additional queen sized bedrooms with built-in robe in one.
- ? Renovated main bathroom offering separate bath and shower.
- ? Internal laundry with third toilet.
- ? Single lock up garage plus off street parking.
- ? Abundance of sub floor storage.
- ? Covered outdoor entertaining space overlooking

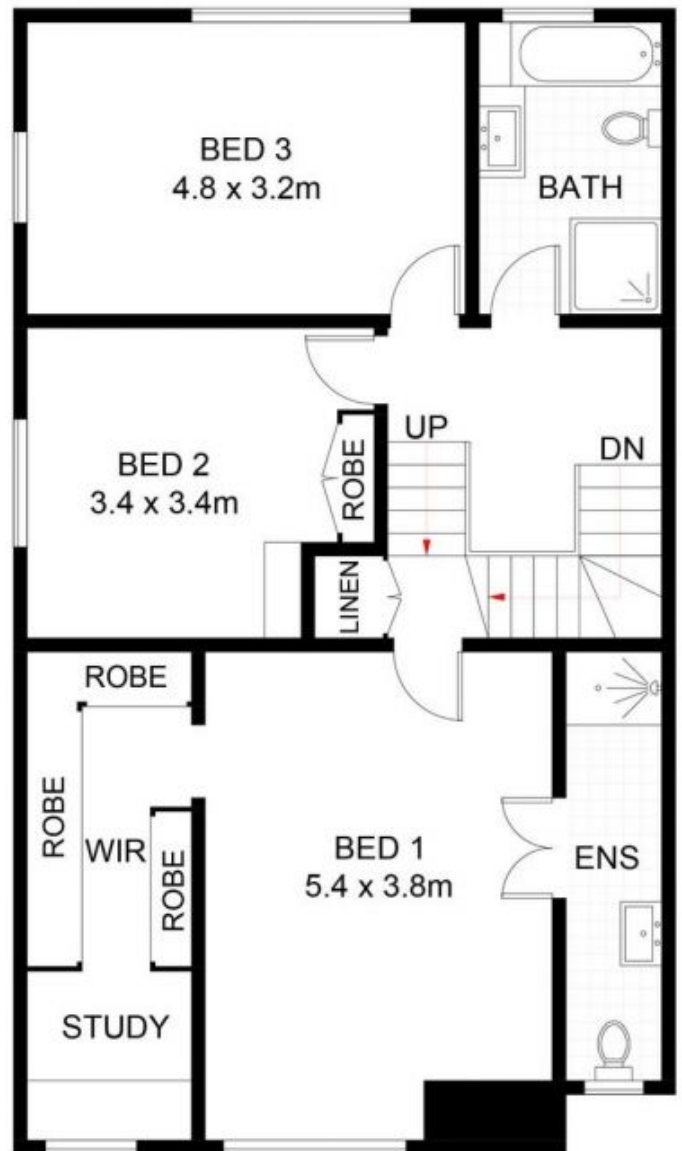
**Type** : Semi Detached  
**Date Available** : Monday, 31st July 2023  
**Bond** : 4,400  
**View** : <https://www.brookes.net.au/lease/nsw/st-george/oatley/residential/semi-detached/7656230>

**Jodie Heeks**  
 m: 0413 447 299  
 o: 9546 8666  
 e: [jh@brookes.net.au](mailto:jh@brookes.net.au)

**Natasha Stefanoski**  
 m: 0451822228  
 o: 9546 8666  
 e: [natasha@brookes.net.au](mailto:natasha@brookes.net.au)



**ENTRY LEVEL**



**UPPER LEVEL**



1/59 Yarran Road, Oatley

Scale in metres. Indicative only. Dimensions are approximate. All information contained herein is gathered from sources we believe to be reliable. However, we cannot guarantee its accuracy and interested persons should rely on their own enquiries. Some images may contain digital furniture.