



13/24-30 Parramatta Street Cronulla NSW

 3  2  1

PRIME HIGHLY SOUGHT BEACH & BAYSIDE LOCATION

By Negotiation

Positioned in the coveted and highly sought "Chelsea" apartment building and set prominently on the South Cronulla peninsula this impressive sun drenched apartment with light filled and partially updated interiors is sure to impress.

Type : Apartment

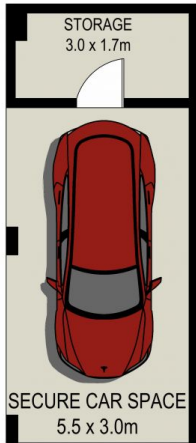
View : <https://www.brookes.net.au/sale/nsw/sutherland/cronulla/residential/apartment/7237861>

Offering a prized low maintenance lifestyle opportunity in a premier beachside location, this well appointed apartment is only footsteps to Shelly Beach & Park and the foreshores of Gunnamatta Bay, as well as walking distance to local eateries, cafes, transport and schools.

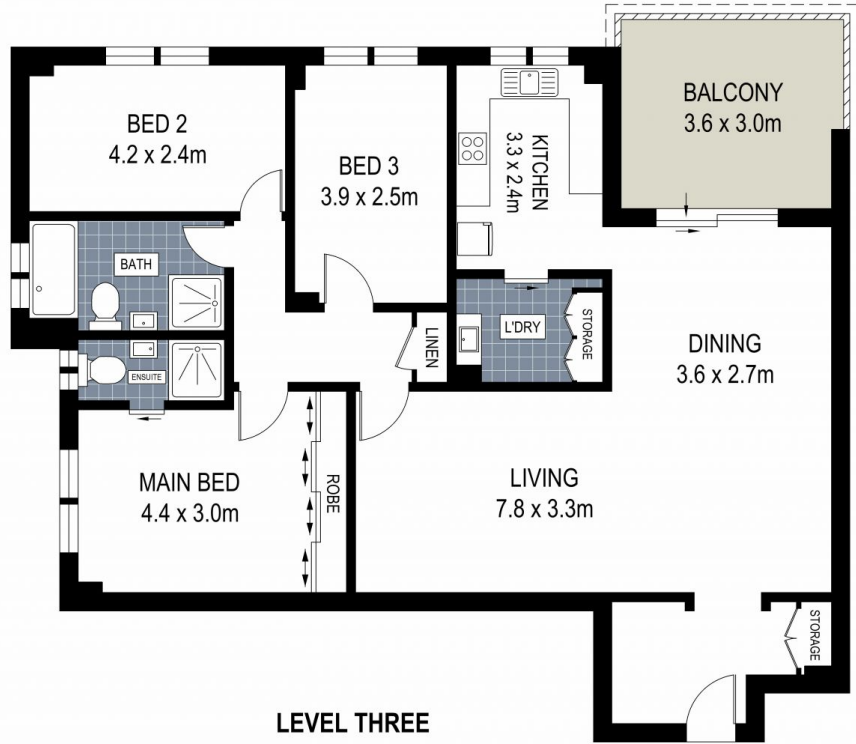
- Open plan living area filled with abundant natural light
- Sleek gourmet stone kitchen
- Generous sized bedrooms
- Master with private ensuite and built-in wardrobe
- Complete main bathroom plus separate internal laundry
- Security building

Jon Brookes
 m: 0416 069 169
 o: 9544 5555
 e: jb@brookes.net.au

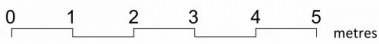
Glenn Rosier
 m: 0411 103 070
 o: 9546 8666
 e: gr@brookes.net.au



BASEMENT



LEVEL THREE



PLANS SHOWN ARE FOR MARKETING PRESENTATION ONLY AND IT'S NOT PART OF ANY LEGAL DOCUMENT. SUBJECT TO ERRORS, INACCURACIES AND IT SHOULD NOT BE USED AS SOLE AND ACCURATE REFERENCE.

13/24-30 Parramatta Street, Cronulla

