



2/8-12 Taylor Close Miranda NSW

 3  2  2

SPACIOUS & STYLISH CONTEMPORARY TOWNHOUSE IN CUL DE SAC LOCALE

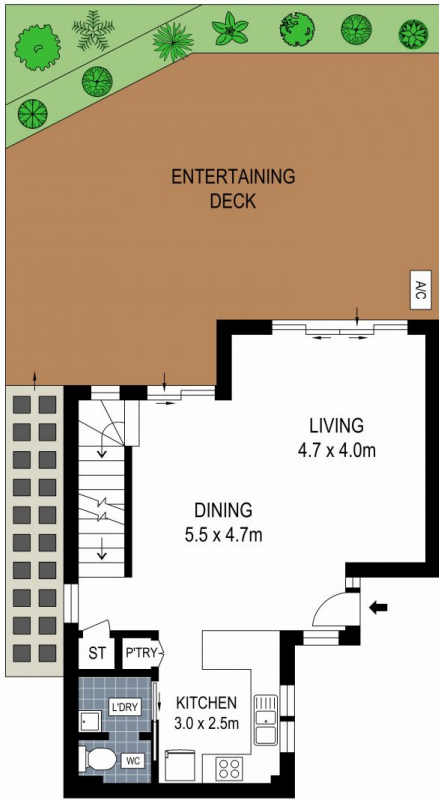
Immaculately presented and boasting quality finishes throughout, this impressive contemporary home is bathed in natural light, set in a highly sought cul-de-sac location and privately nestled at the rear of a coveted and well maintained boutique complex.

Centrally positioned and ideal for those looking for an easy, carefree and low maintenance lifestyle, this impressive home strikes the perfect balance between privacy and convenience only a short stroll to Westfields Shopping Centre together with Miranda train and bus stations.

- Light filled open plan living flows to spacious outdoor entertaining
- Gourmet stone kitchen with quality appliances and gas cooking
- Three large bedrooms all with built-ins, master with private ensuite

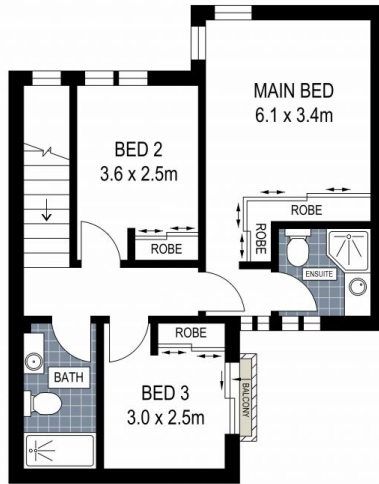
Type : Townhouse
View : <https://www.brookes.net.au/sale/nsw/sutherland/miranda/residential/townhouse/7109903>

Jon Brookes
 m: 0416 069 169
 o: 9544 5555
 e: jb@brookes.net.au

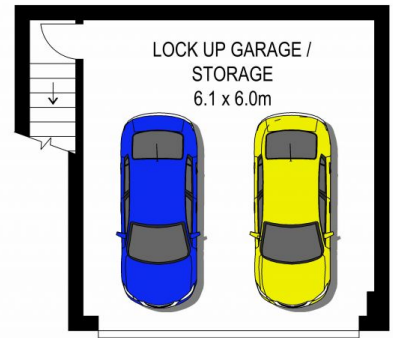


GROUND FLOOR

0 1 2 3 4 5 metres



FIRST FLOOR



BASEMENT



PLANS SHOWN ARE FOR MARKETING PRESENTATION ONLY AND IT'S NOT PART OF ANY LEGAL DOCUMENT. SUBJECT TO ERRORS, INACCURACIES AND IT SHOULD NOT BE USED AS SOLE AND ACCURATE REFERENCE.

2/8-12 Taylor Close, Miranda

