



36 Russell Street Oatley NSW

 4  3  3

## PRIME STREET TO WATERFRONT ESTATE

Set in a highly sought waterfront enclave of elite and prestigious homes this prime street to waterfront estate of over 1,510 square metres commands panorama vistas across the tranquil waters of Oatley Bay.

Immaculate and much loved home offered for sale for the first time is filled with sentiment and provides a versatile layout with spacious sun filled updated interiors & quality inclusions throughout.

A choice of alfresco entertaining options and superb waterfront facilities for boating enthusiasts including pontoon, jetty, ramp, slip rails and boatshed together with level lawn and sandy beach at waters edge.

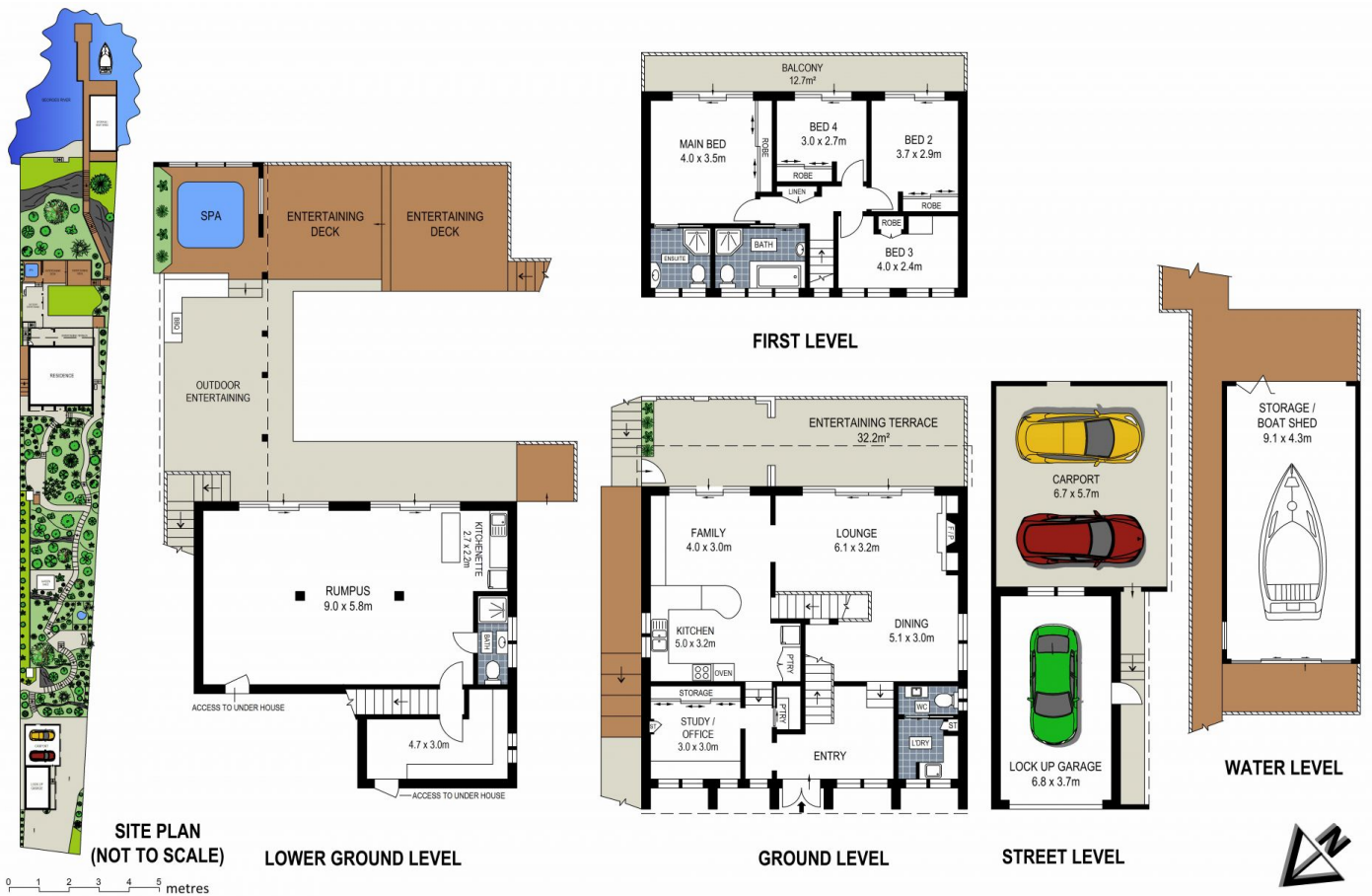
- Street to water front haven
- Huge site of over 1,510 square metres
- Immaculate existing family home
- Choice of multiple indoor and outdoor entertaining areas

**Type :** House

**View :** <https://www.brookes.net.au/sale/nsw/st-george/oatley/residential/house/7015566>

**Jon Brookes**  
m: 0416 069 169  
o: 9544 5555  
e: [jb@brookes.net.au](mailto:jb@brookes.net.au)

**Brett Ramsey**  
m: 0451 922 229  
o: 95468666  
e: [brett@brookes.net.au](mailto:brett@brookes.net.au)



36 Russell Street, Oatley

BROOKES PARTNERS