



26 The Circuit Shellharbour NSW

 3  1  2

## FLAWLESS PRESENTATION IN HIGHLY SOUGHT ENCLAVE

\$ 820,000

Set in the highly sought and coveted enclave of "Blackbutt Woods Estate" and only moments to local Forest Reserve, Pristine Beaches, Marinas, shopping village & transport this immaculately presented home is guarantee to impress.

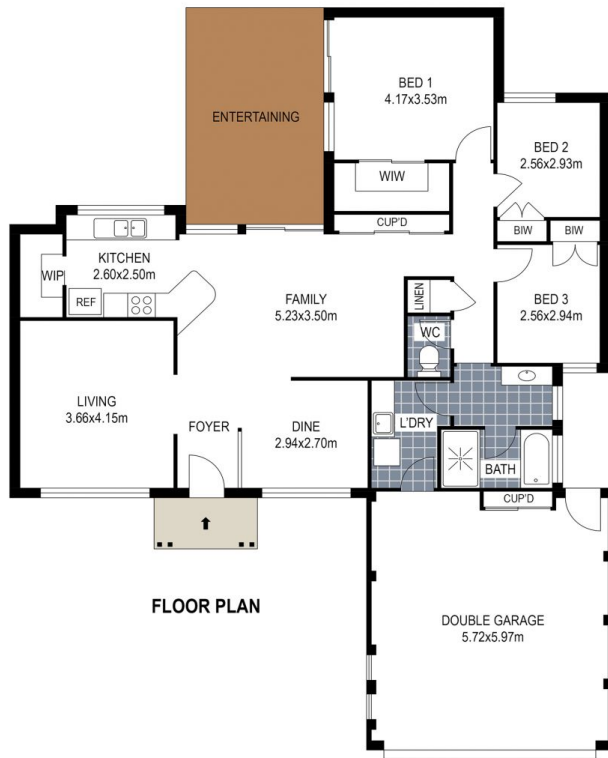
Don't miss a rare opportunity to purchase this impressive home boasting low maintenance single level living and providing the ultimate carefree lifestyle.

- Immaculate presentation and quality inclusions
- Single level living - no stairs
- Desirable 16 metre wide frontage
- Generous sunfilled interiors throughout
- Distinct formal and informal living and dining areas
- Master bedroom with yard access, each bedroom with robe
- Large kitchen with pantry, gas cooking and eat in area adjacent

**Type** : House  
**Land Size** : 416 sqm  
**View** : <https://www.brookes.net.au/sale/nsw/wollongong-illawarra/shellharbour/residential/house/6769268>

**Jon Brookes**  
m: 0416 069 169  
o: 9544 5555  
e: [jb@brookes.net.au](mailto:jb@brookes.net.au)

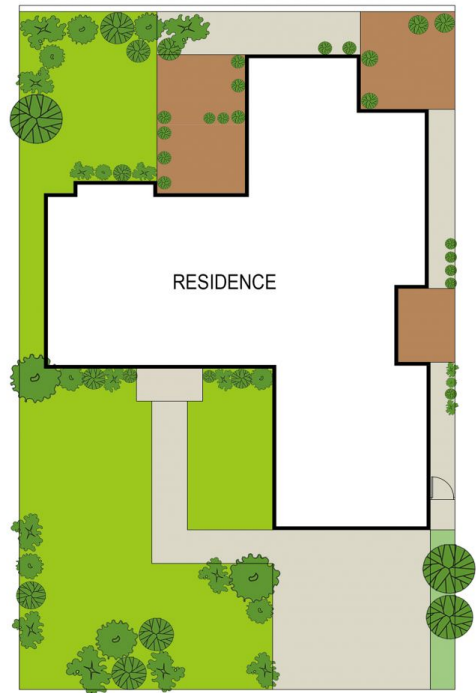
**Luca Zovic**  
m:  
o:  
e: [luca@brookes.net.au](mailto:luca@brookes.net.au)



0 1 2 3 4 5 metres

PLANS SHOWN ARE FOR MARKETING PRESENTATION ONLY AND IT'S NOT PART OF ANY LEGAL DOCUMENT. SUBJECT TO ERRORS, INACCURACIES AND IT SHOULD NOT BE USED AS SOLE AND ACCURATE REFERENCE.

26 The Circuit Shellharbour



SITE PLAN (NOT TO SCALE)

**BROOKES PARTNERS**