

19 Seaforth Avenue Woollooware NSW

 6  3  2

### GRAND BAYSIDE FAMILY HOME

Perfectly positioned in a highly sought bayside location this immaculately presented and spacious family home is bathed in natural light and offers an array of formal and informal living & entertaining options.

Set on a generous level block over 650 square metres with over 15 metre frontage, and with a coveted north facing yard this impressive home is only a short stroll to local beaches, bays, cafes and eateries, schools, shopping centres and Woollooware Train Station.

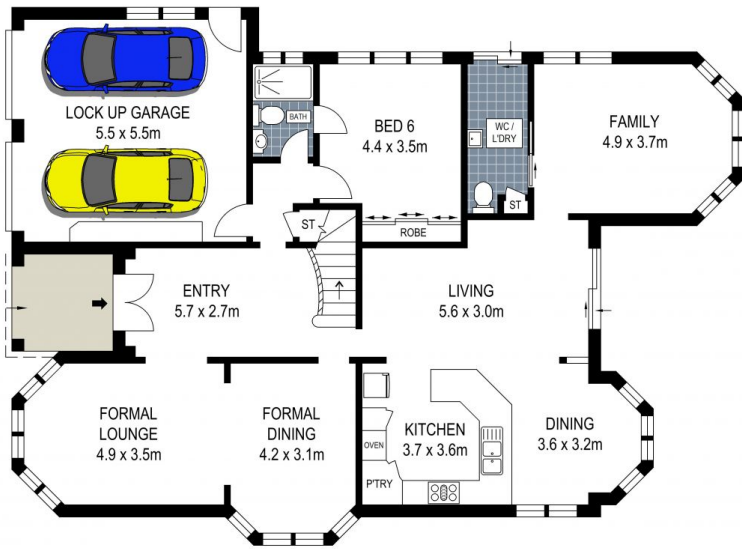
- Immaculately presented throughout with well-appointed quality inclusions
- Voluminous layout filled with natural light & a choice of formal and informal living & entertaining options
- Large gourmet kitchen with quality appliances and gas cooking
- Six generous sized bedrooms each with built in robes
- Master bedroom complete with luxurious en-suite and

**Type** : House

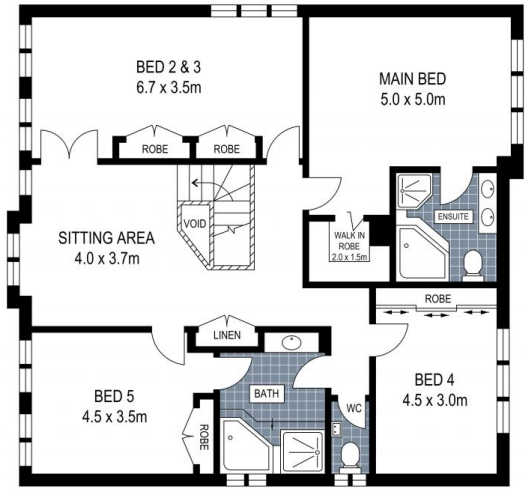
**View** : <https://www.brookes.net.au/sale/nsw/sutherland/woollooware/residential/house/6657149>

**Jon Brookes**  
 m: 0416 069 169  
 o: 9544 5555  
 e: [jb@brookes.net.au](mailto:jb@brookes.net.au)

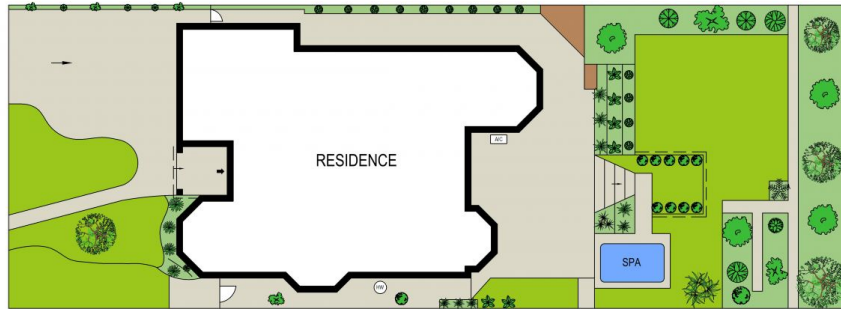
**Mareesa Metters**  
 m: 0434 741 666  
 o:  
 e: [mm@brookes.net.au](mailto:mm@brookes.net.au)



GROUND FLOOR



FIRST FLOOR



SITE PLAN (NOT TO SCALE)

0 1 2 3 4 5 metres

PLANS SHOWN ARE FOR MARKETING PRESENTATION ONLY AND IT'S NOT PART OF ANY LEGAL DOCUMENT. SUBJECT TO ERRORS, INACCURACIES AND IT SHOULD NOT BE USED AS SOLE AND ACCURATE REFERENCE.



19 Seaforth Avenue, Woollooware

