



26 Russell Street Oatley NSW

4 3 4

First time offered this unique and exceptional opportunity provides a tranquil waterfront haven embracing spectacular uninterrupted panoramic waterviews in one of Oatley's most highly sought waterfront enclaves.

Designed and built by award winning architect and builder and crafted from the finest materials and inclusions. This impressive "Tuscan" inspired masterbuilt solid brick home is impeccably presented and capitalises on stunning panoramic waterviews.

- Masterbuilt luxury home with quality inclusions throughout
- Positioned to capture sweeping waterviews from every angle
- Quality inclusions and sunfilled interiors throughout
- An array of formal & informal living options
- Gourmet stone kitchen complete with European

Price : By Negotiation

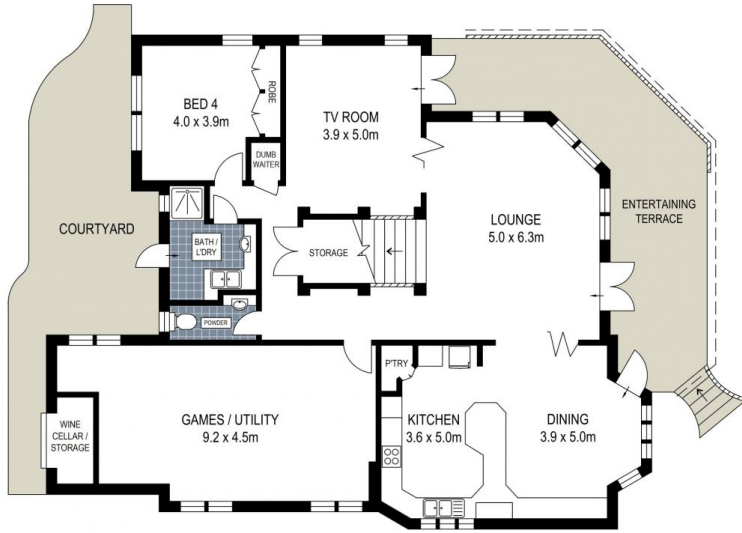
View : <https://www.brookes.net.au/sale/nsw/st-george/oatley/residential/house/6365143>



Jon Brookes
02 9544 5555

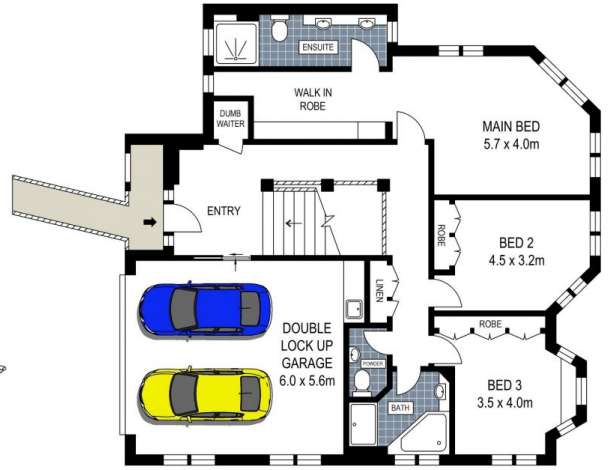


Glenn Rosier
9546 8666



LOWER GROUND FLOOR

0 1 2 3 4 5 metres



GROUND FLOOR



PLANS SHOWN ARE FOR MARKETING PRESENTATION ONLY AND IT'S NOT PART OF ANY LEGAL DOCUMENT. SUBJECT TO ERRORS, INACCURACIES AND IT SHOULD NOT BE USED AS SOLE AND ACCURATE REFERENCE.

26 Russell Street, Oatley

