



6 Sylvan Grove Picnic Point NSW

 4  2  5

SINGLE LEVEL FAMILY HOME OVERLOOKING ADJOINING RESERVE ON HUGE LAND

Positioned within one of the districts most coveted and highly sought riverside enclaves, this single level brick family home filled with sunlit interiors offers an abundance of space for the modern family occupying an impressive site of over 1,110 square metres.

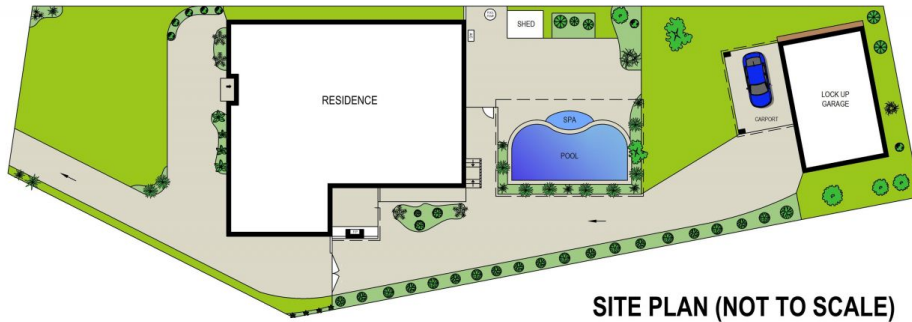
Fusing seamless indoor and outdoor living and entertaining areas this generous home is private, peaceful and boasts panoramic bush views together with garaging, workshop and parking for numerous vehicles and all your toys including for caravans, boats &/or trailers.

- Formal & informal living & dining areas
- Quality timber kitchen with plenty of cupboard space
- Generous bedrooms each with built-in robes
- Master bedroom with private ensuite and walk-in robe
- Ducted air conditioning plus internal laundry with additional toilet suite

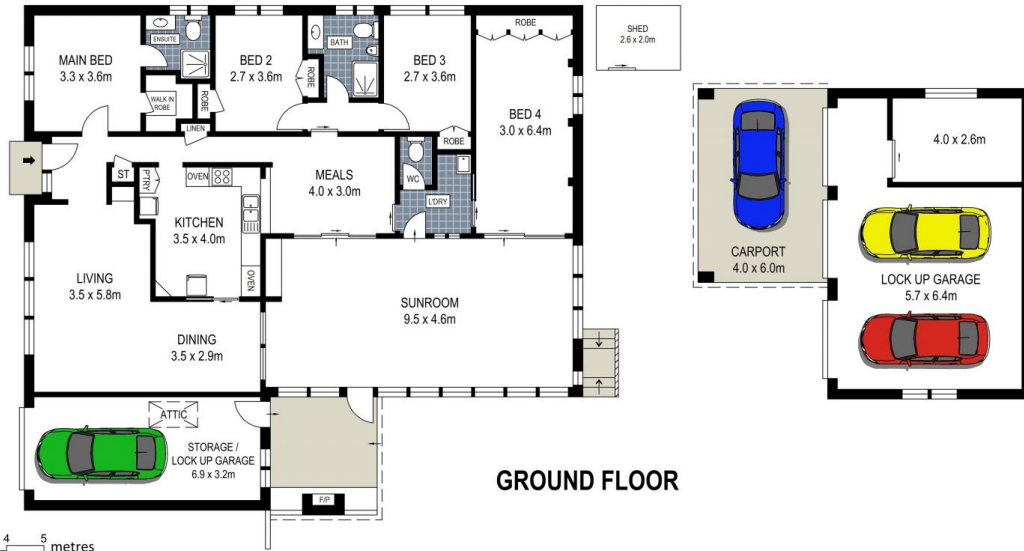
Type : House
Land Size : 1119 sqm
View : <https://www.brookes.net.au/sale/nsw/canterburybankstown/picnic-point/residential/house/6152492>

Jon Brookes
 m: 0416 069 169
 o: 9544 5555
 e: jb@brookes.net.au

Jessica Gollan
 m: 0451 922 229
 o: 9544 5555
 e: jg@brookes.net.au



SITE PLAN (NOT TO SCALE)



GROUND FLOOR

0 1 2 3 4 5 metres



PLANS SHOWN ARE FOR MARKETING PRESENTATION ONLY AND IT'S NOT PART OF ANY LEGAL DOCUMENT. SUBJECT TO ERRORS, INACCURACIES AND IT SHOULD NOT BE USED AS SOLE AND ACCURATE REFERENCE.

6 Sylvan Grove, Picnic Point

BROOKES PARTNERS