



371 Woollooware Road Burraneer NSW

 6  2  3

PRIME DEEP WATERFRONT ESTATE - OVER 1,720m²

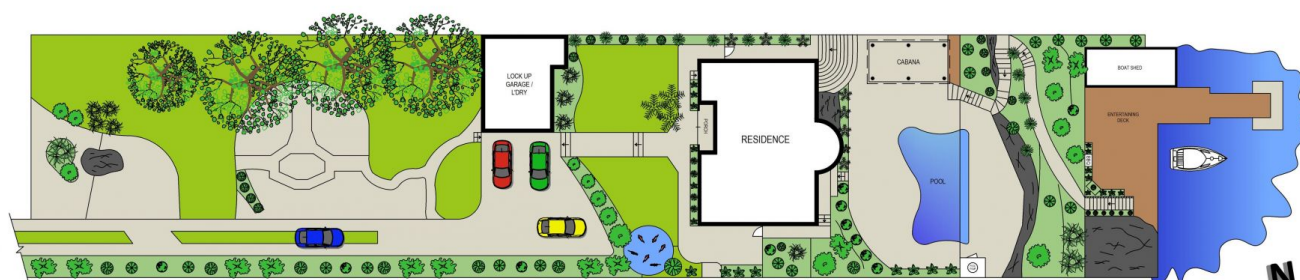
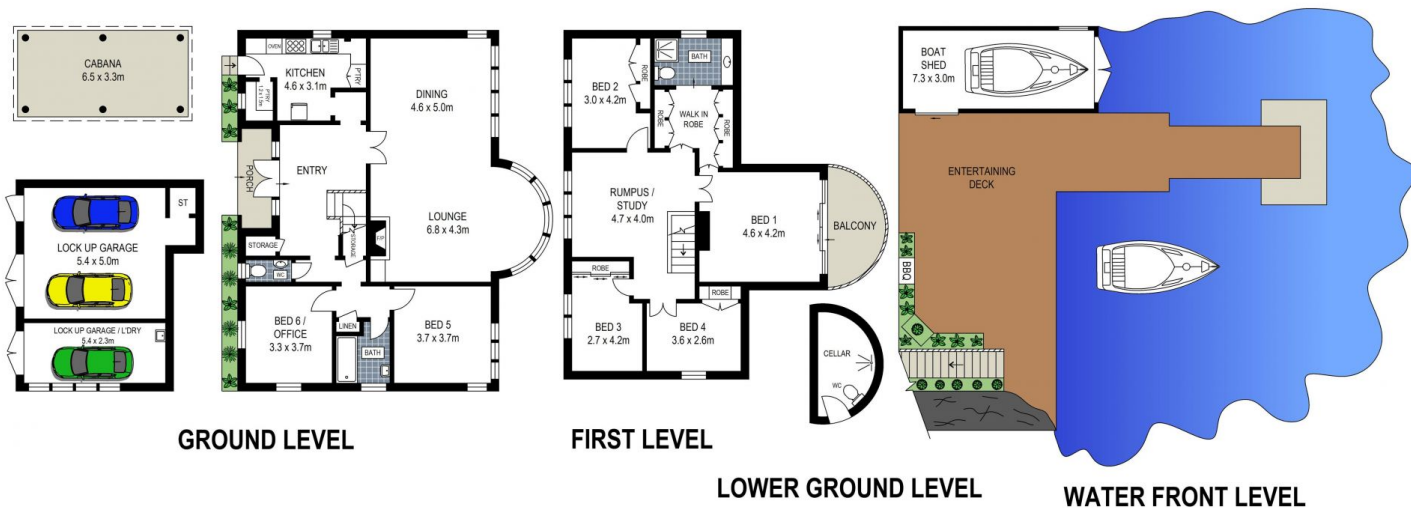
Offered for the first time in over 90 years. "Chester Lodge" provides a truly unique opportunity to secure a prime west facing deep waterfront estate set prominently on one of the districts most highly sought after peninsulas commanding spectacular panoramic waterviews over the pristine Burraneer Bay & Port Hacking Waterway.

This impressive estate offers a rare & exciting opportunity with endless potential boasting over 1,720 square metres of prime waterfront land and includes waterfront improvements of boatshed, jetty, pontoon, slip rails and ocean pool.

- Prime deep water estate exceeding 1,720m²
- Spectacular panoramic waterviews
- Highly coveted & sought westerly aspect
- Impressive water frontage of over 18 metres
- Period charm home filled with sentiment
- Inground pool plus entertaining area

Type : House
Land Size : 1729 sqm
View : <https://www.brookes.net.au/sale/nsw/sutherland/burraneer/residential/house/5892809>

Jon Brookes
 m: 0416 069 169
 o: 9544 5555
 e: jb@brookes.net.au



0 1 2 3 4 5 metres

SITE PLAN (NOT TO SCALE)

PLANS SHOWN ARE FOR MARKETING PRESENTATION ONLY AND IT'S NOT PART OF ANY LEGAL DOCUMENT. SUBJECT TO ERRORS, INACCURACIES AND IT SHOULD NOT BE USED AS SOLE AND ACCURATE REFERENCE.

371 Woollooware Road, Burraneer

BROOKES PARTNERS