



23 Geoffrey Crescent Loftus NSW

 3  1  2

IMMACULATE SINGLE LEVEL HOME WITH DUAL STREET FRONTAGES

Set in a highly sought after location, fusing fresh sun filled interiors & modern simplicity throughout this stunning single level home offers an exciting opportunity and is sure to impress.

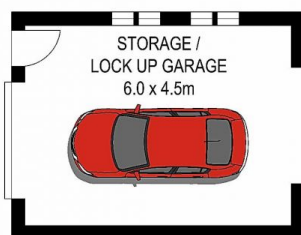
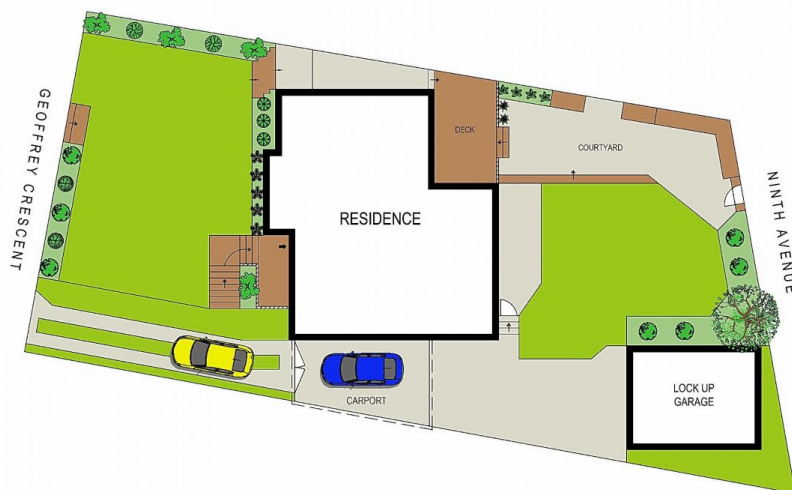
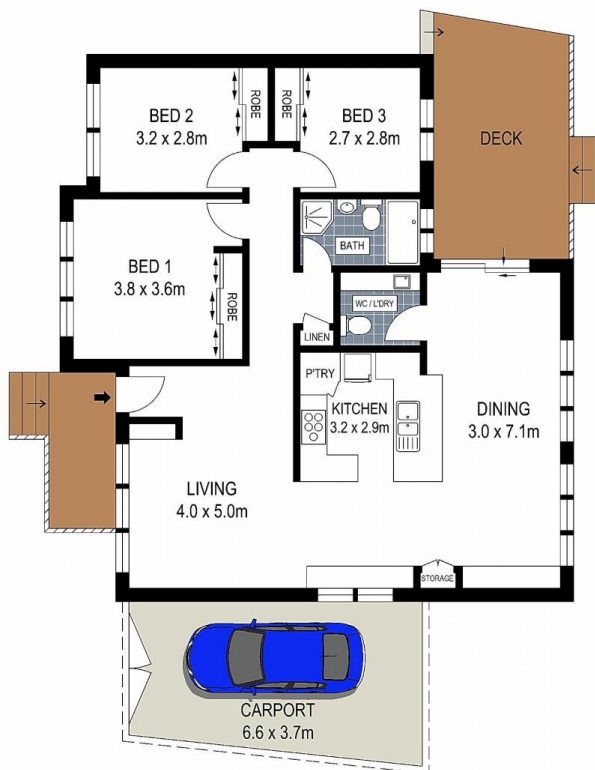
Boasting desirable two street frontages & private manicured grassed yards this immaculate home is located only moments to local schools, shops, reserves & train station.

- Immaculate single level family home
- Modern simplicity & updated sun filled interiors
- Stylish stone kitchen with quality appliances & gas cooking
- Spacious bedrooms all with built-in robes
- Internal laundry with additional toilet
- Two street frontages & manicured grassed yards
- Expansive alfresco entertaining area
- Lock up garaging plus plenty of off street parking

Type : House
Land Size : 556 sqm
View : <https://www.brookes.net.au/sale/nsw/sutherland/loftus/residential/house/5791031>

Jon Brookes
m: 0416 069 169
o: 9544 5555
e: jb@brookes.net.au

Glenn Rosier
m: 0411 103 070
o: 9546 8666
e: gr@brookes.net.au



SITE PLAN
(NOT TO SCALE)

GROUND FLOOR

0 1 2 3 4 5 metres

PLANS SHOWN ARE FOR MARKETING PRESENTATION ONLY AND IT'S NOT PART OF ANY LEGAL DOCUMENT. SUBJECT TO ERRORS, INACCURACIES AND IT SHOULD NOT BE USED AS SOLE AND ACCURATE REFERENCE.

23 Geoffrey Crescent, Loftus

BROOKES  PARTNERS

