



88 Parthenia Street Dolans Bay NSW

 6  3  3

PRIME STREET TO DEEP WATERFRONT HOLDING

Set prominently on one of the districts most highly sought waterfront peninsulars and commanding spectacular panoramic water views over the pristine Port Hacking River, this impressive street to deep waterfront estate is being offered for the first time in 70 years.

Offering a rare & exciting opportunity with endless potential to the successful purchaser the property boasts over 1,650 square metres of prime street to deep water front land with waterfront improvements including boatshed, jetty, pontoon, ramp plus own private sandy beach.

- Prime street to deep water frontage
- Spectacular panoramic waterviews
- Impressive site of over 1,650 square metres and over 17 metres wide
- Solid existing home with two self contained levels
- Private sandy beach at deep waters edge
- Waterfront improvements include boatshed, jetty, pontoon

Type : House
Land Size : 1657 sqm
View : <https://www.brookes.net.au/sale/nsw/sutherland/dolans-bay/residential/house/5757669>

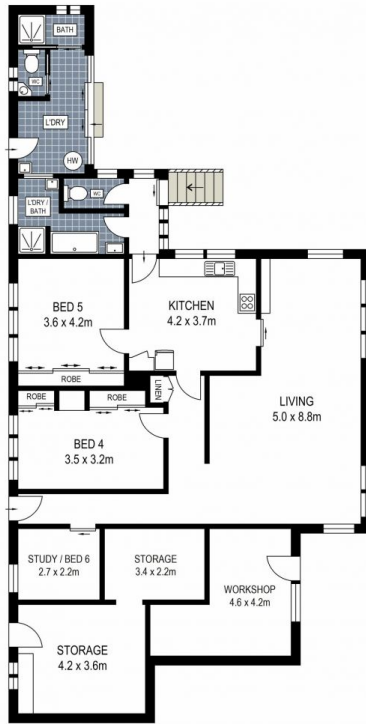
Jon Brookes
m: 0416 069 169
o: 9544 5555
e: jb@brookes.net.au

Jessica Gollan
m: 0451 922 229
o: 9544 5555
e: jg@brookes.net.au

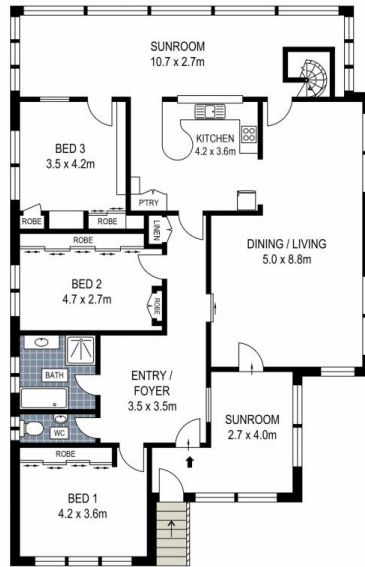
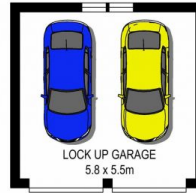


**SITE PLAN
(NOT TO SCALE)**

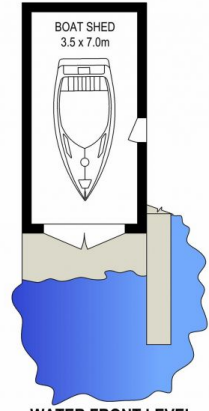
0 1 2 3 4 5 metres



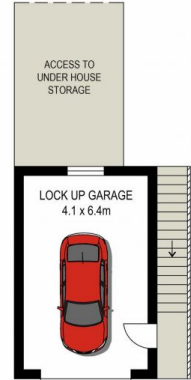
LOWER GROUND LEVEL



GROUND LEVEL



WATER FRONT LEVEL



STREET LEVEL



PLANS SHOWN ARE FOR MARKETING PRESENTATION ONLY AND IT'S NOT PART OF ANY LEGAL DOCUMENT. SUBJECT TO ERRORS, INACCURACIES AND IT SHOULD NOT BE USED AS SOLE AND ACCURATE REFERENCE.

88 Parthenia Street, Dolans Bay

BROOKES PARTNERS