



Padstow

ONE OF PADSTOWS BEST

Undoubtedly one of the best industrial facilities in the area, consisting of high clearance warehouse space and first floor office accommodation.

- 560sqm of ground floor warehouse and amenities
- 83sqm of first floor office & showroom
- Three Phase power
- Plenty of parking & yard space
- Currently tenanted on monthly bases
- Call now to inspect

FOR FURTHER DETAILS AND OR AN INSPECTION
PLEASE CALL TODAY

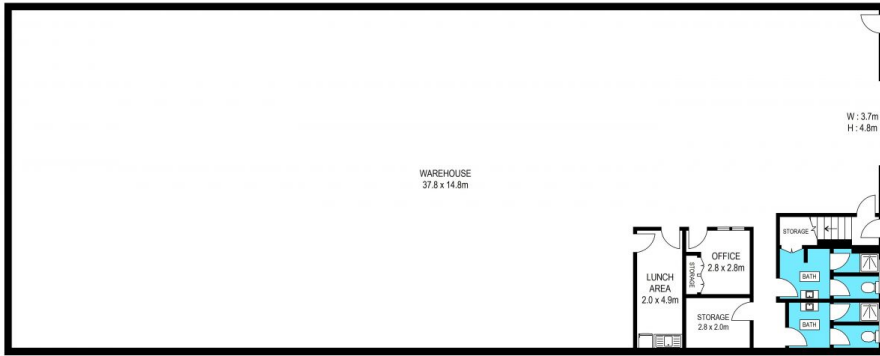
Type : Industrial
Building Size: 643 sqm
View : <https://www.brookes.net.au/sale/nsw/canterburybankstown/padstow/commercial/industrial/5757515>

Brookes Partners

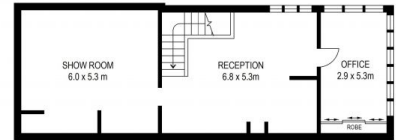
m:
o: 9546 8666
e: sales@brookes.net.au



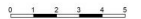
SITE PLAN (NOT TO SCALE)



GROUND FLOOR



FIRST FLOOR



ADDRESS
 9 Nelson Avenue,
 PADSTOW

MARKETING DRAWING
 SCALE 1 : 150 on A3
 PAGE 1 / 1

DISCLAIMER:
 Plans Shown are for presentation purposes and are not part of any legal document or title, and subject to errors, inaccuracies and should not be used as sole and accurate reference. Particulars given are for general information only and do not constitute any representation of the vendor or the agent. No liability will be accepted.