



6 Myerla Crescent Connells Point NSW

 5  3  4

## PRIME STREET TO BEACH AND WATER FRONTAGE

Don't miss a truly unique opportunity to secure this first time offered for sale prime street to waterfront property with endless potential to the successful purchaser.

Set prominently on one of the districts most highly sought waterfront peninsulars and commanding spectacular panoramic water views this impressive property extends from a cul de sac frontage to private sandy beach plus jetty to deeper waterfrontage.

- Prime street to waterfront property
- Private & serene cul-de-sac locale
- Spectacular 180 degree panoramic waterviews
- Impressive site of over 980 square metres
- Expansive water frontage includes golden sandy beach
- Solid existing home includes self contained in law accommodation

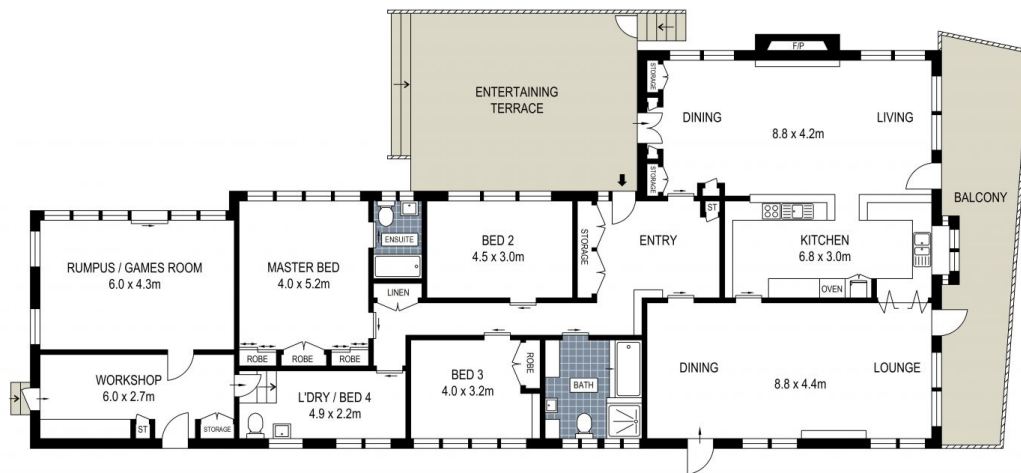
For Further details &/or to arrange an inspection please call

**Type** : House

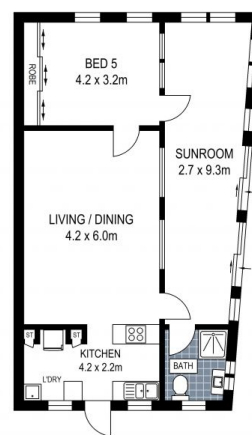
**View** : <https://www.brookes.net.au/sale/nsw/st-george/connells-point/residential/house/5757281>

**Jon Brookes**  
m: 0416 069 169  
o: 9544 5555  
e: [jb@brookes.net.au](mailto:jb@brookes.net.au)

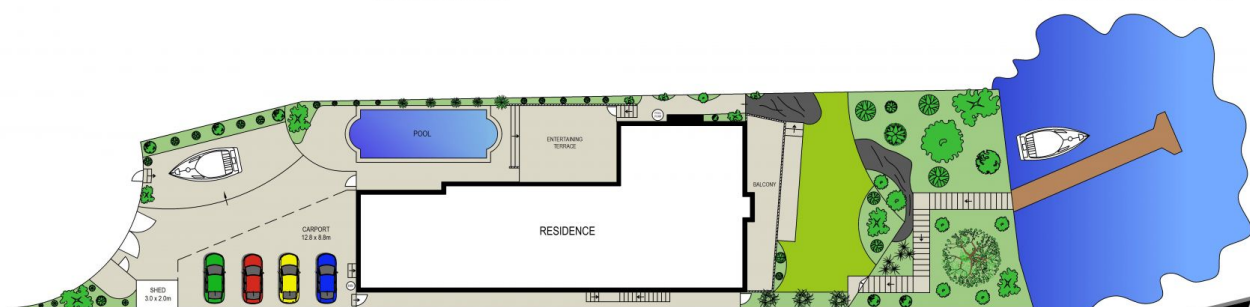
**Jessica Gollan**  
m: 0451 922 229  
o: 9544 5555  
e: [jg@brookes.net.au](mailto:jg@brookes.net.au)



GROUND FLOOR



LOWER GROUND FLOOR



SITE PLAN (NOT TO SCALE)

0 1 2 3 4 5 metres

PLANS SHOWN ARE FOR MARKETING PRESENTATION ONLY AND IT'S NOT PART OF ANY LEGAL DOCUMENT. SUBJECT TO ERRORS, INACCURACIES AND IT SHOULD NOT BE USED AS SOLE AND ACCURATE REFERENCE.

6 Myerla Crescent, Connells Point

BROOKES  PARTNERS