



26E/1-3 Endeavour Road Caringbah NSW

FULLY FITTED OUT

This unit has been extensively fitted out with creating double the original floor area. The warehouse downstairs has roller shutter access and good amenities whilst the offices upstairs comprise the original plus fit out.

- Cheap rental
- 2 Car spaces
- Popular complex
- Uncongested - good for container
- Contact for an inspection today!

For further details &/or an inspection please call the team at Brookes Partners on 9546 8666 or David Halyard on 0414 283 278.

Type : Industrial
Building Size: 250 sqm
View : <https://www.brookes.net.au/lease/nsw/sutherland/caringbah/commercial/industrial/5756123>

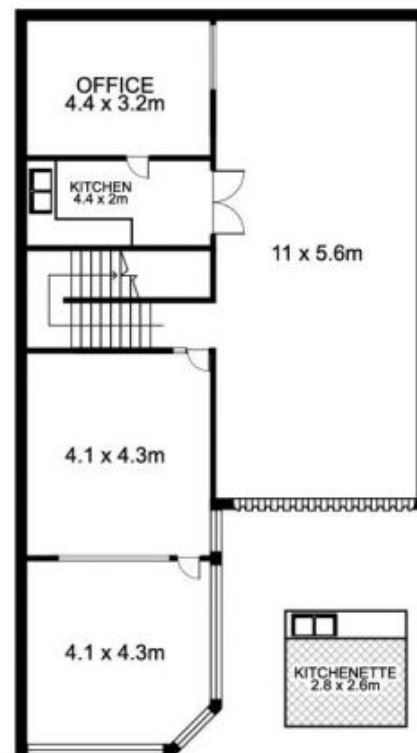
David Halyard
 m: 0434 742 222
 o: 9546 8666
 e: davidh@brookes.net.au

Craig Atkinson
 m: 0412 001 650
 o: 9546 8666
 e: craig@brookes.net.au

26 and 27/1-3 Endeavour Road, CARINGBAH



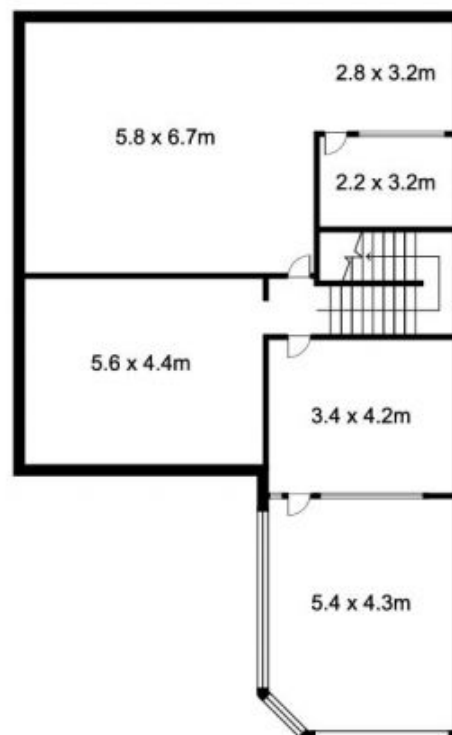
GROUND FLOOR
27/1-3 ENDEAVOUR ROAD



FIRST FLOOR



GROUND FLOOR
26/1-3 ENDEAVOUR ROAD



FIRST FLOOR