



ACTUAL VIEW



4/5-9 Ellis Street Sylvania NSW

 3  2  3

## Space and Grace

Set in the boutique and award winning development "Ellise" this impeccably presented contemporary townhouse showcases quality inclusions, impressive proportions and sunny light filled interiors.

Features include:

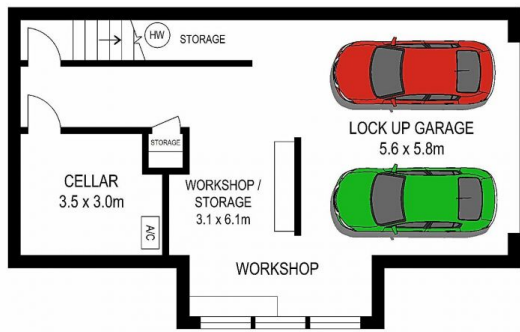
- Full Brick construction security complex with ducted air-conditioning
- Main entry via private courtyard complete with parterre garden
- Expansive water and urban view from the first floor
- Formal and casual living options
- Casual living and dining leads to the private sun drenched courtyard
- Open plan modern kitchen complete with quality (gas cooktop) appliances, polyurethane cabinetry, stone bench tops and walk-in pantry
- Fully Integrated laundry with matching cabinetry
- 3 spacious bedrooms, main with walk-in robe, ensuite and

**Type :** Townhouse

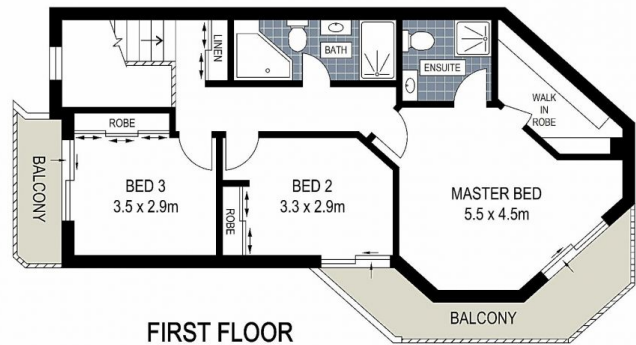
**View :** <https://www.brookes.net.au/sale/nsw/sutherland/sylvania/residential/townhouse/5756085>

**Joanne Rosier**  
m: 0420 945 765  
o: 9546 8666  
e: jr@brookes.net.au

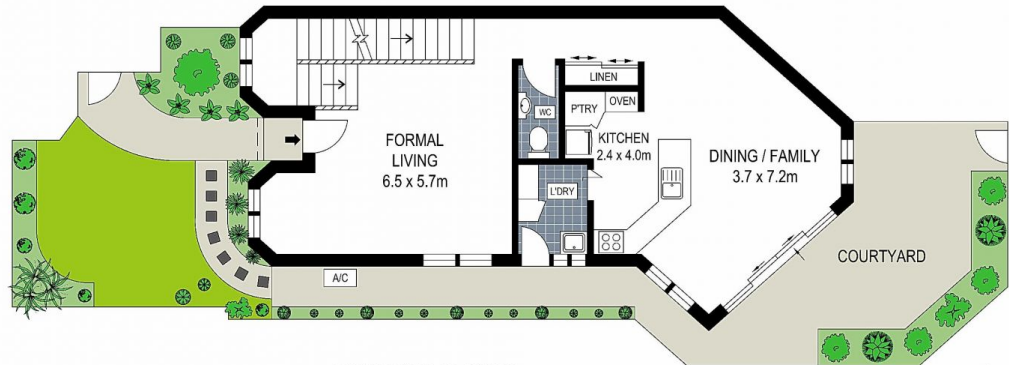
**Glenn Rosier**  
m: 0411 103 070  
o: 9546 8666  
e: gr@brookes.net.au



**BASEMENT**



**FIRST FLOOR**



**GROUND FLOOR**

0 1 2 3 4 5 metres

PLANS SHOWN ARE FOR MARKETING PRESENTATION ONLY AND IT'S NOT PART OF ANY LEGAL DOCUMENT. SUBJECT TO ERRORS, INACCURACIES AND IT SHOULD NOT BE USED AS SOLE AND ACCURATE REFERENCE.

4/5-9 Ellis Street, Sylvania

**BROOKES PARTNERS**