



**Caringbah**

**FACTORY 950M2 - YARD 2500M2**

SUIT BUILDERS, CONTRACTORS, YARD USERS, HIRE COMPANIES

Ready to occupy is this freestanding industrial factory and warehouses situated on 2500m<sup>2</sup> of hardstand yard. AVAILABLE FOR SALE OR FOR LEASE.

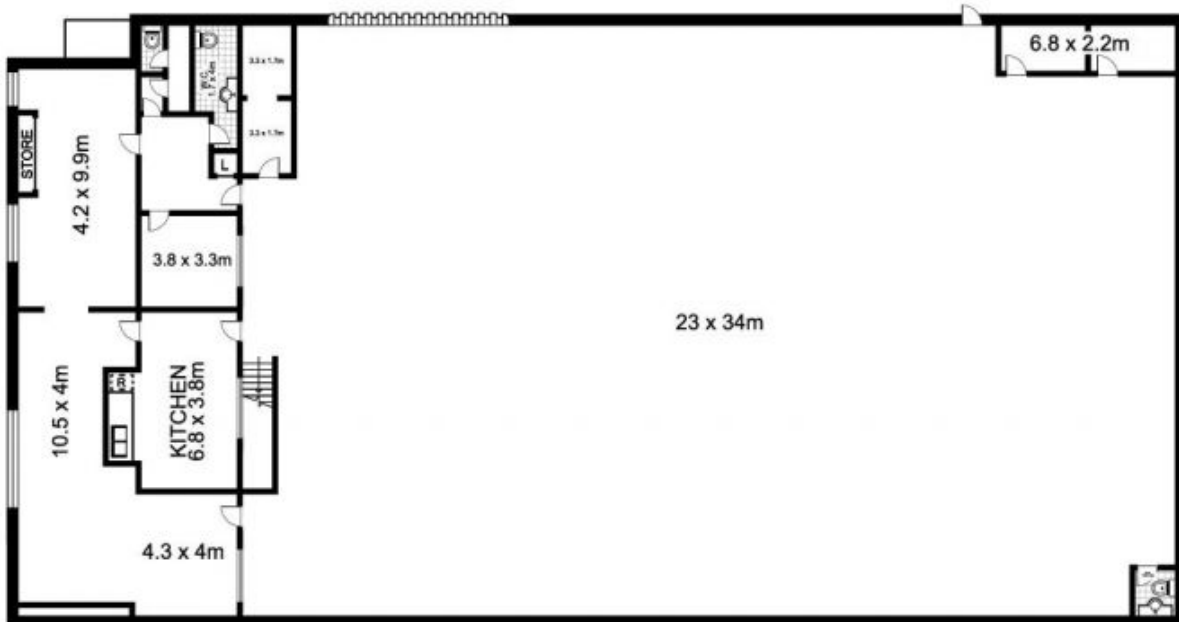
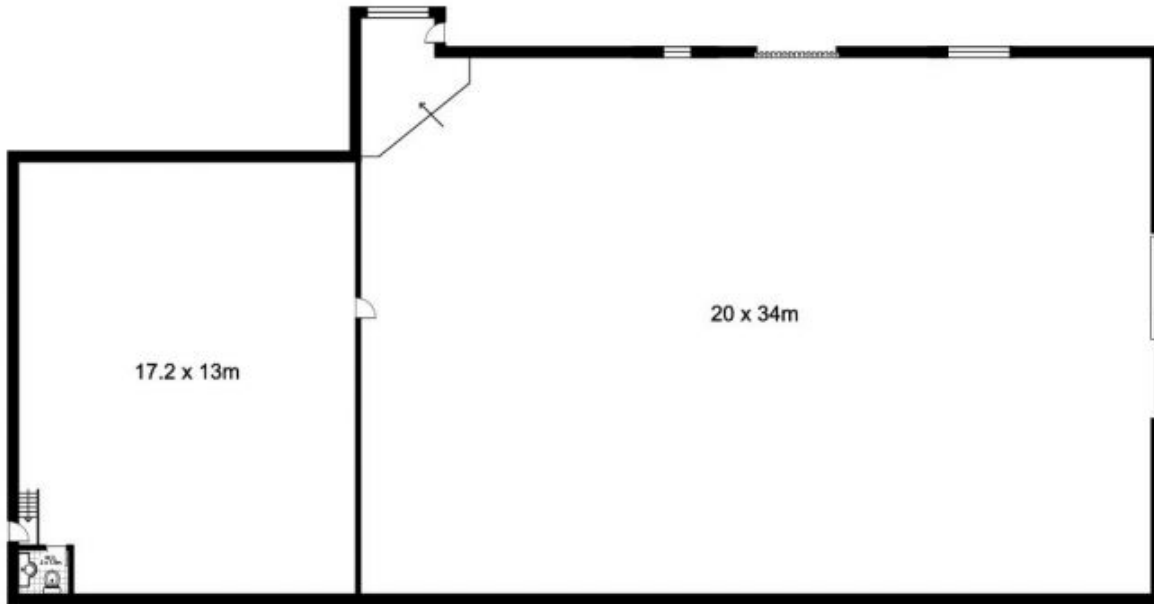
- Caringbah Location
- Suit yard users/hire/contractor
- Good mix of low clearance and high clearance warehousing
- Available Now

**Type** : Industrial  
**Building Size:** 950 sqm  
**Land Size** : 2500 sqm  
**View** : <https://www.brookes.net.au/lease/nsw/sutherland/caringbah/commercial/industrial/5756078>

**David Halyard**  
 m: 0434 742 222  
 o: 9546 8666  
 e: davidh@brookes.net.au

**Jon Brookes**  
 m: 0416 069 169  
 o: 9544 5555  
 e: jb@brookes.net.au

# 11-15 Captain Cook Drive, CARINGBAH



GROUND FLOOR (FIRST FLOOR NO ACCESS - SAME OVERALL SIZE)

Plans by  
**surroundpix**  
com.au  
1300 30 32 40

This floor plan is intended as a guide only. Layout dimension are approximate only. No representation or warranties of any nature whatsoever are given or intended. Any person using this information should rely on their own enquiries.